

Air Projection System Quick Installation Guide

(Model Name: WS-9211G)

Version: 0.95

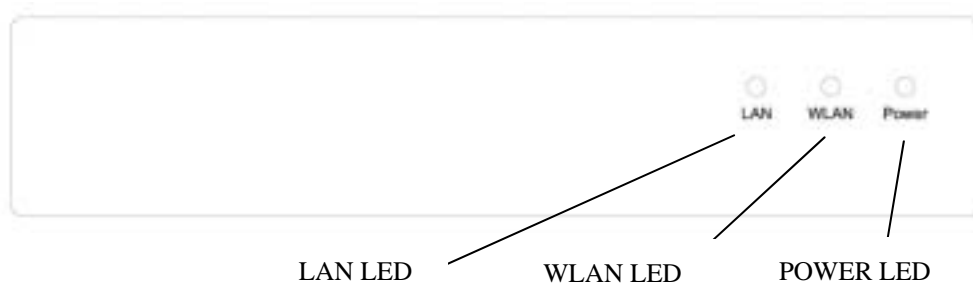
Date: Aug 25, 2006

1. Package Contents

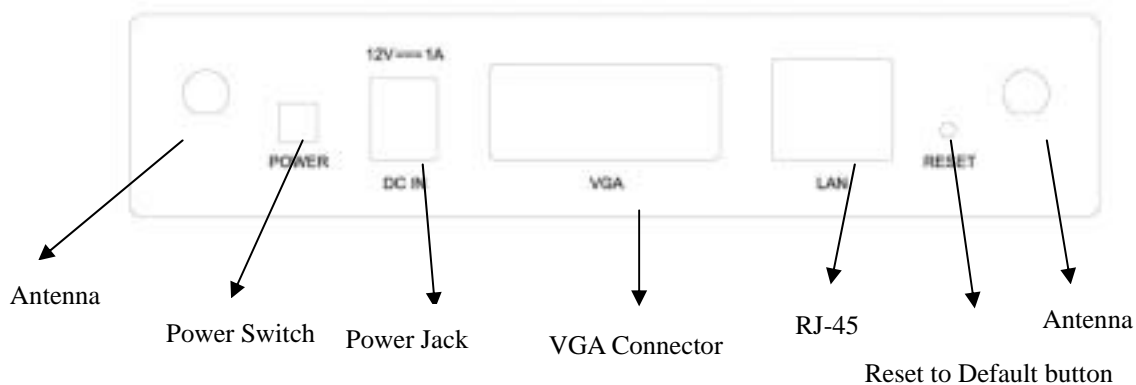
- WS-9211G Box
- Power Adapter (DC +5V, 2.5A)
- CD ROM with User's Manual inside.
- Quick Installation Guide
- Warranty Card

2. Physical Details

- Front Panel

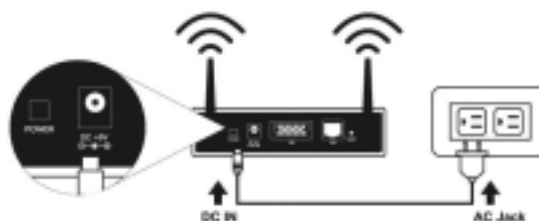


- Rear Panel

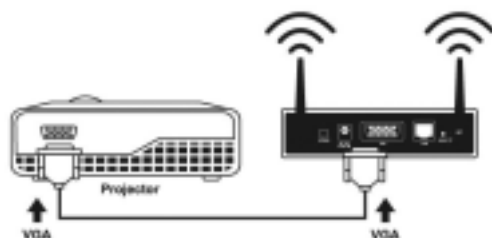


3. Installation

- 1) Connect power adapter DC plug to WS-9211G DC jack and other side to AC jack..



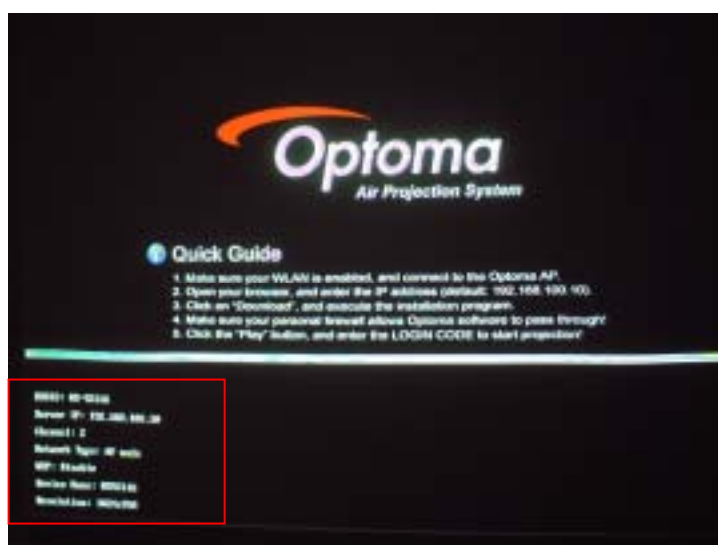
- 2) Connect Projector's VGA cable to WS-9211G VGA connector on the rear panel.



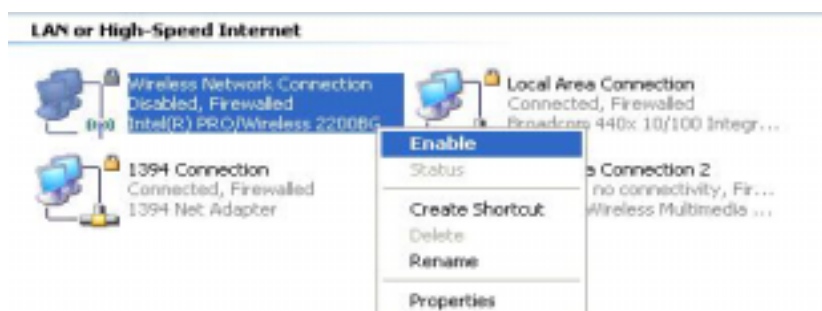
- 3) Turn on projector.
- 4) Turn on WS-9211G box
- ◆ After system ready, the "POWER" LED and "WLAN" LED will be yellow color. The "LAN" LED will be off.
 - ◆ When LAN connection is established, then "LAN" LED will be yellow color and blinking while data transmission.

4. Setup

- 1) If you see below picture on the projector screen menu, it indicates your WS-9211G box is ready now.



2) Make sure your PC WLAN card is enabled..



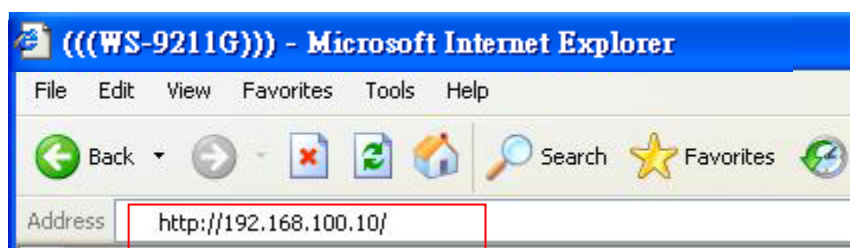
3) Connect your PC to WS-9211G box.

- ◆ Connect PC WLAN card to WS-9211G box, as below.:



4) Open browser directly, or enter the IP address to get in WS-9211G web home page.

- ◆ The default IP address is **192.168.100.10**
- ◆ Or refer to the IP address which shown on the projector screen.

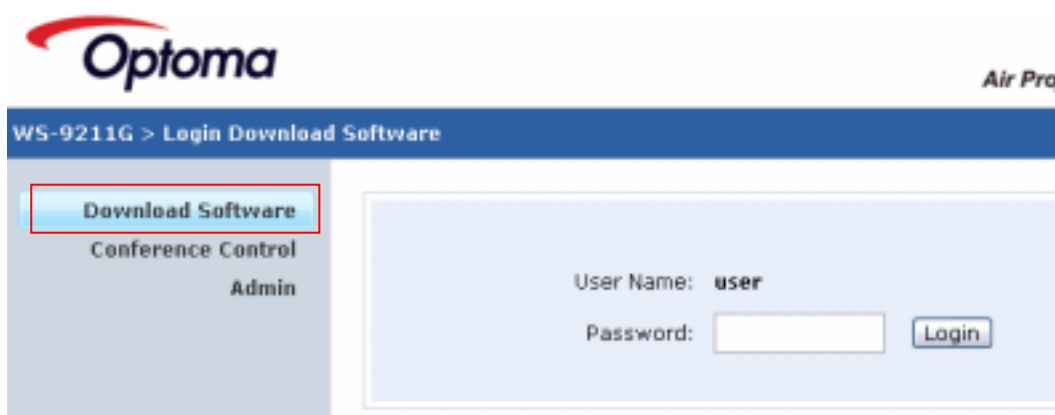


5) After you get **Home page** successfully, then below screen shown up.

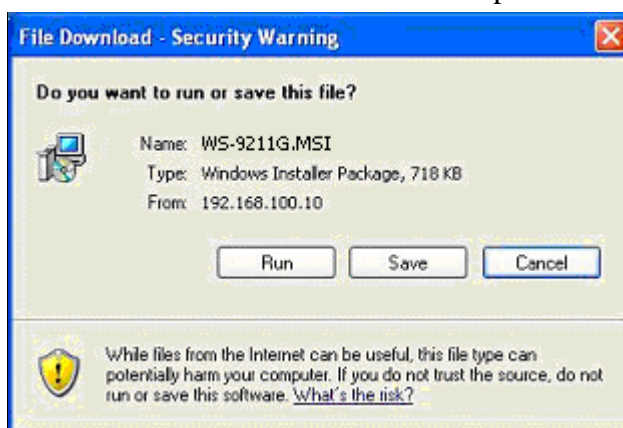


6) Click on “**Download Software**”, and execute the installation program.

- ◆ Press “**Login**” button to download software, the default password is blank.
- ◆ You may execute this program directly or save it and then perform it later.
- ◆ After install the program, this software shortcut comes out on the PC screen.



- ◆ Default doesn't need to enter the password.



- 7) Make sure your personal **firewall** allows WS-9211G software to pass through.
- When you see below dialog box, just click “**Unblock**” to allow firewall to add this program on the exception list automatically.



- 8) After you installation completed, this program will execute directly and search WS-9211G box automatically, when box founded then a “**LOGIN CODE**” dialog box comes out. Just enter the **LOGIN CODE** to start projection !
- ◆ You can see login code on the projector screen.



- 9) If login code is correct, it will project your PC screen to the projector automatically. Don't need enter “**PLAY**” button at all.

